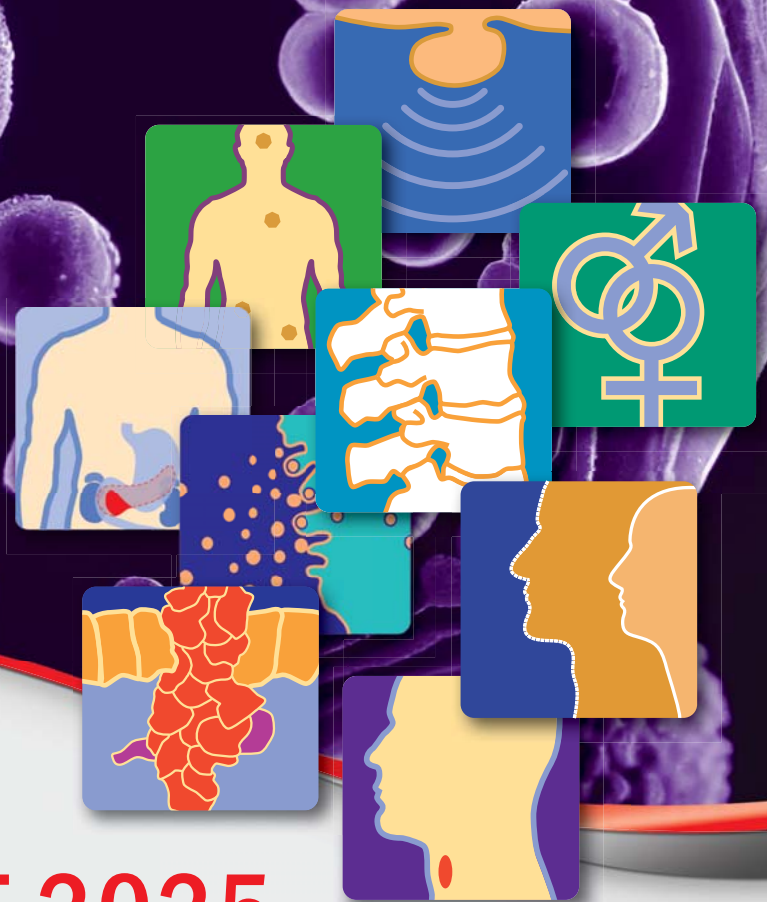




**BECKMAN
COULTER**



PRODUCT LIST 2025

Immunoassays RIA, IRMA, REA



REPRODUCTIVE - ANDROGENS

Kit	Cat #	Method	Type	Tests	Max. activity kBq
Androstenediol glucuronide	DSL9200	RIA	CT	100	185
Androstenedione	IM0674	RIA	CT	100	185
Androstenedione	DSL3800	RIA	CT	100	185
DHEA	IM1138	RIA	CT	100	185
DHEA	DSL8900	RIA	CT	100	350
DHEA sulfate	IM0729	RIA	CT	100	185
DHEA-S-7	DSL2700	RIA	HP	100	185
Dihydrotestosterone	DSL9600i	RIA	CT	100	185
Dihydrotestosterone RUO	DSL9600	RIA	CT	100	185
Free Testosterone	DSL4900	RIA	CT	100	185
SHBG	IM3532	IRMA	CT	100	370
Testosterone	IM1087	RIA	CT	100	370
Testosterone direct	IM1119	RIA	CT	100	370

Kit	Sensitivity (LoD*)	Incubation time	Calibrator range	Sample	
				Vol. [μ L]	Form
Androstenediol glucuronide	0.07 ng/mL	3 hrs/RT; SH	0; 0.5-100 ng/mL	100	s
Androstenedione	0.04 ng/mL	1 hr/37°C	0; 0.1-15 ng/mL	100	ex: s; p
Androstenedione	0.05 ng/mL	1 hr/37°C	0; 0.1-10 ng/mL	50	s; p
DHEA	0.17 ng/mL	1 hr/37°C	0; 0.5-30 ng/mL	100	ex: s; p
DHEA	0.25 ng/mL*	1 hr/RT; SH	0; 0.3-40 ng/mL	25	s; p
DHEA sulfate	2.51 mg/100 mL*	30 min/37°C	0; 10-1000 μ g/100 mL	25	s; p
DHEA-S-7	12.3 ng/mL	30 min/37°C	0; 50-8000 ng/mL	25	s
Dihydrotestosterone	9.14 pg/mL	2 hrs/RT; SH	0; 25-2500 pg/mL	100	ex: s; p
Dihydrotestosterone RUO	9.14 pg/mL	2 hrs/RT; SH	0; 25-2500 pg/mL	100	ex: s; p
Free Testosterone	0.13 pg/mL*	1 hr/37°C	0; 0.25-100 pg/mL	50	s
SHBG	0.1 nM	1 hr+1 hr/RT; SH	0; 3.3-300 nM	20	s
Testosterone	0.05 ng/mL	1 hr/RT; SH	0; 0.1-20 ng/mL	50	ex: s; p
Testosterone direct	0.04 ng/mL	1 hr/RT; SH	0; 0.1-20 ng/mL	50	s; p

AVAILABLE SEPARATELY

Reagent	Cat #
Extraction vials (165 pcs)	IM3284
Caps for extraction vials (165 pcs)	IM3290

Reagent	Cat #
Diluent S (2.5 mL), can be used exclusively with DSL8900, IM1664	IM2445



REPRODUCTIVE - FERTILITY

Kit	Cat #	Method	Type	Tests	Max. activity kBq
17 α -Hydroxyprogesterone	IM1452	RIA	CT	100	640
Estradiol	A21854	RIA	CT	100	185
	B89462	RIA	CT	50	185
Ultra-sensitive Estradiol	DSL4800	RIA	HP	100	185
Estrone	DSL8700	RIA	CT	100	185
Estrone-sulfate	DSL5400	RIA	HP	100	185
FSH	IM2125	IRMA	CT	100	370
	IM3301	IRMA	CT	400	4x370
LH	IM1381	IRMA	CT	100	370
	IM3302	IRMA	CT	400	4x370
Prolactin	IM2121	IRMA	CT	100	370
	IM3303	IRMA	CT	400	4x370
Progesterone	IM1188	RIA	CT	100	200

Kit	Sensitivity (LoD*)	Incubation time	Calibrator range	Sample	
				Vol. [μ L]	Form
17 α -Hydroxyprogesterone	0.07 ng/mL*	2 hrs/RT; SH	0; 0.1-50 ng/mL	25	s; p
Estradiol	10.4 pg/mL*	3 hrs/RT; SH	0; 15-4320 pg/mL	100	s; p
Ultra-sensitive Estradiol	2.2 pg/mL	1 hr+2 hrs+20 min/RT	0; 5-750 pg/mL	200	s; p
Estrone	10.0 pg/mL*	1 hr/RT; SH (2 hrs/RT; SH)	0; 16-2000 pg/mL	50 (200)	s; p
Estrone-sulfate	0.01 ng/mL	3 hrs/RT; SH+15 min/RT	0; 0.05-80 ng/mL	100	s; p
FSH	0.17 IU/L	90 min/RT; SH	0; 0.5-180 IU/L	100	s; p
LH	0.16 IU/L	90 min/RT; SH	0; 0.5-180 IU/L	100	s; p
Prolactin	0.36 ng/mL*	1 hr/RT; SH	0; 2-180 ng/mL	50	s; p
Progesterone	0.04 ng/mL*	1 hr/RT; SH	0; 0.1-50 ng/mL	50	s; p

AVAILABLE SEPARATELY

Reagent	Cat #
Estradiol diluent (10 mL), can be used exclusively with A21854	IM1863
Diluent US Estradiol + α -Subunit (2 mL), can be used exclusively with DSL4800, IM1186	B64533

Reagent	Cat #
Precipitation reagent (50 mL), can be used exclusively with IM2121, IM3303, IM3210	A09775
17 α -Hydroxyprogesterone zero calibrator (5 mL), can be used exclusively with IM1452	B23373



REPRODUCTIVE - PRENATAL SCREENING

Kit	Cat #	Method	Type	Tests	Max. activity kBq
AFP	IM1441	IRMA	CT	100	320
AFP-screening	A37404	IRMA	CT	100	320
hCG-screening	IM2235	RIA	CT	100	325
Unconjugated estriol	IM3594	RIA	CT	100	300

Kit	Sensitivity (LoD)	Incubation time	Calibrator range	Sample	
				Vol. [μ L]	Form
AFP	0.39 IU/mL	15 min/RT; SH+30 min/RT; SH	0; 3-400 IU/mL	50	s; a
AFP-screening	0.98 IU/mL	45 min/RT; SH	0; 5-220 IU/mL	50	s; a
hCG-screening	4.46 kIU/L	1 hr/RT; SH	0; 7-250 kIU/L	50	s
Unconjugated estriol	0.08 ng/mL	30 min/RT; SH	0; 0.1-30 ng/mL	50	s



THYROID FUNCTION

Kit	Cat #	Method	Type	Tests	Max. activity kBq
Anti-hTg	IM3223	IRMA	CT	100	325
Anti-TPO	A56719	RIA	CT	100	640
Anti R-TSH	A15728	RRA	CT	60	100
	A54464	RRA	CT	100	180
FT3	IM1579	RIA	CT	100	225
	IM3320	RIA	CT	400	4x225
FT4	IM1363	RIA	CT	100	310
	IM3321	RIA	CT	400	4x310
FT4 PLUS	C55856	RIA	CT	100	310
	C55857	RIA	CT	400	4x310
Thyroglobulin	A85726	IRMA	CT	96	480
TSH	IM3712	IRMA	CT	100	515
	IM3713	IRMA	CT	400	4x515
TT3	IM1699	RIA	CT	100	165
	IM3287	RIA	CT	400	4x165
TT4	IM1447	RIA	CT	100	110
	IM3286	RIA	CT	400	4x110
T3 uptake	A30282	RIA	CT	100	310

Kit	Sensitivity (LoD*)	Incubation time	Calibrator range	Sample	
				Vol. [µL]	Form
Anti-hTg	2.02 IU/mL	90 min+1 hr/RT; SH	0; 30-3000 IU/mL	20	s; p
Anti-TPO	2.81 IU/mL*	1 hr/RT; SH	0; 7-2500 IU/mL	20	s
Anti R-TSH	0.33 U/L	2 hrs+1 hr/RT; SH	0; 1-40 U/L	100	s
FT3	0.78 pM*	2 hrs/RT; SH	0; 2-40 pM	100	s; p
FT4	0.4 pM	1 hr/RT; SH	0; 2.5-75 pM	25	s; p
FT4 PLUS	0.94 pM*	1 hr/RT; SH	0; 2.5-75 pM	25	s; p
Thyroglobulin	0.3 ng/mL	2 hrs/RT; SH+18-24 hrs/RT	0; 0.75-600 ng/mL	100	s; p
TSH	0.04 mIU/L	1 hr/RT; SH	0; 0.15-50 mIU/L	100	s; p
TT3	0.36 nM*	1 hr/RT; SH	0; 0.75-12 nM	25	s; p
TT4	18.2 nM*	1 hr/RT; SH	0; 25-400 nM	20	s; p
T3 uptake	N/A	1 hr/RT	N/A	20	s

AVAILABLE SEPARATELY

Reagent	Cat #
FT3 and FT4 Control sample (5x 2 mL), can be used exclusively with IM1579/IM3320 and IM1363/IM3321	B48021

Reagent	Cat #
TSH calibrator 100 mIU/L (5x 1 mL), can be used exclusively with IM3712/IM3713	B69513



DIABETES

Kit	Cat #	Method	Type	Tests	Max. activity kBq
Albumin	IM3251	RIA	CT	100	300
Anti-insulin	A36473	IRMA	HP	50	40
	A36474	IRMA	HP	100	2x40
C-peptide	IM3639	IRMA	CT	100	640
Insulin	IM3210	IRMA	CT	100	640

Kit	Sensitivity (LoD*)	Incubation time	Calibrator range	Sample	
				Vol. [µL]	Form
Albumin	0.72 mg/L*	1 hr/RT; SH	0; 1-150 mg/L	50	u
Anti-insulin	0.032 U/mL	16-24 hrs/RT+1 hr/2-8°C	0; 0.5-50 U/mL	20	s
C-peptide	3.79 pM	2 hrs/RT; SH	0; 25-6400 pM	50	s; p; u
Insulin	0.49 µIU/mL	2 hrs/RT; SH	0; 3-300 µIU/mL	50	s; p

AVAILABLE SEPARATELY

Reagent	Cat #
Precipitation reagent (50 mL), can be used exclusively with IM3210, IM2121, IM3303	A09775



TUMOR MARKERS

Kit	Cat #	Method	Type	Tests	Max. activity kBq
AFP	IM1441	IRMA	CT	100	320
α -Subunit	IM1186	IRMA	CT	100	370
β 2-Microglobulin	IM1113	RIA	CT	100	148
CA 125 Antigen	IM2233	IRMA	CT	100	480
	B64312	IRMA	CT	50	480
MUC-1 (CA 15-3)	IM2397	IRMA	CT	100	600
	B64314	IRMA	CT	50	600
CA 19-9 Antigen	IM3151	IRMA	CT	100	310
	B64313	IRMA	CT	50	310
CEA	IM2204	IRMA	CT	100	640
Free β -hCG	IM2459	IRMA	CT	100	650
hCG	IM2110	IRMA	CT	100	650
Cytokeratin 19 Fragment	A56888	IRMA	CT	50	360
NSE	A15607	IRMA	CT	50	260
PSA total	IM1950	IRMA	CT	100	580
PSA free	IM2520	IRMA	CT	50	275
Thymidine Kinase	IM1948	REA	N.A.	50	190
Chromogranin A	C49136	RIA	HP	100	56
Monototal [®]	C52721	IRMA	CB	100	1628
TPS [®]	C52733	IRMA	CB	100	660
TPAcyk [™]	C52727	IRMA	CB	100	1628

Kit	Sensitivity (LoD [*])	Incubation time	Calibrator range	Sample	
				Vol. [μ L]	Form
AFP	0.39 IU/mL [*]	15 min+30 min/RT; SH	0; 3-400 IU/mL	50	s; a
α -Subunit	0.11 IU/L [*]	1 hr/RT; SH	0; 0.25-10 IU/L	100	s; p
β 2-Microglobulin	0.13 mg/L [*]	90 min/RT; SH	0; 0.3-30 mg/L	50	s; p; u
CA 125 Antigen	3.95 U/mL [*]	4 hrs/RT; SH	0; 15-500 U/mL	100	s; p
MUC-1 (CA 15-3)	0.41 U/mL [*]	2 hrs+1 hr/RT; SH	0; 15-250 U/mL	200	s; p
CA 19-9 Antigen	6.45 U/mL [*]	2 hrs+1 hr/RT; SH	0; 15-480 U/mL	50	s
CEA	0.19 ng/mL	2 hrs/RT; SH	0; 1-325 ng/mL	30	s
Free β -hCG	0.07 ng/mL [*]	1 hr+30 min/RT; SH	0; 0.3-200 ng/mL	100	s; p
hCG	4.54 IU/L [*]	1 hr/RT; SH	0; 8-800 IU/L	50	s; p
Cytokeratin 19 Fragment	0.53 ng/mL [*]	18-22 hrs/2-8°C	0; 1.2-130 ng/mL	100	s
NSE	0.70 ng/mL [*]	2 hrs/RT; SH	0; 2-200 ng/mL	50	s
PSA total	0.05 ng/mL [*]	2 hrs/RT; SH	0; 1-100 ng/mL	100	s
PSA free	0.14 ng/mL [*]	2 hrs/RT; SH	0; 0.3-30 ng/mL	200	s
Thymidine Kinase	0.74 U/L	210 min/37°C+30 min/RT	0; 2.5-80 U/L	25	s; p
Chromogranin A	0.19 nM [*]	20-24 hrs/2-8°C+30-60 min/2-8°C	0; 1.56-50 nM	100	s; p
Monototal [®]	17.9 U/L [*]	2 hrs/RT; SH	0; 50-6000 U/L	100	s
TPS [®]	37.0 U/L [*]	2 hrs/RT; SH	0; 50-2000 U/L	100	s
TPAcyk [™]	0.46 ng/mL [*]	4 hrs/RT; SH	0; 0.5-30 ng/mL	100	s

AVAILABLE SEPARATELY

Reagent	Cat #
Diluent US Estradiol + α -Subunit (2 mL), can be used exclusively with DSL4800, IM1186	B64533
AFP Calibrator 6 (5x 0.5 mL) can be used exclusively with IM1441	D02373



ADRENAL FUNCTION

Kit	Cat #	Method	Type	Tests	Max. activity kBq
ACTH	IM2030	IRMA	CT	100	814
	B89463	IRMA	CT	50	814
Aldosterone	IM1664	RIA	CT	100	165
Aldosterone	DSL8600	RIA	CT	100	185
Angiotensin I	IM3518	RIA	CT	100	260
Cortisol	IM1841	RIA	CT	100	185
Cortisol Sensitive SALIVA Protocol	C23117	RIA	CT	100	185
	C23118	RIA	CT	50	185
Renin	DSL25100	IRMA	CT	100	370

Kit	Sensitivity (LoD ⁺)	Incubation time	Calibrator range	Sample	
				Vol. [µL]	Form
ACTH	4.37 pg/mL*	1 hr+2 hrs/RT; SH	0; 10-1500 pg/mL	300	p
Aldosterone	25.77 pg/mL*	3 hrs/RT; SH	0; 30-2000 pg/mL	50	s; p; u
Aldosterone	7.64 pg/mL	3 hrs/RT; SH	0; 25-1600 pg/mL	100	s; p; u
Angiotensin I	0.07 ng/mL	2 hrs/RT; SH	0; 0.3-30 ng/mL	75	p
Cortisol	8.60 nM*	1 hr/RT; SH	0; 20-2250 nM	50	s; p; u
Cortisol Sensitive	4.23/0.80 nM	1 hr/RT; SH	0; 10-2250 nM/0; 1-225 nM	50/300	s; p; u; sal
Renin	0.81 pg/mL	3 hrs/RT; SH	0; 5-500 pg/mL	200	p

AVAILABLE SEPARATELY

Reagent	Cat #
Aldosterone - Solution U (3 mL), can be used exclusively with IM1664	IM1736
Diluent S (2.5 mL), can be used exclusively with IM1664, DSL8900	IM2445
Aldosterone zero calibrator (12 mL), can be used exclusively with DSL8600	A98160

Reagent	Cat #
Cortisol zero calibrator (10 mL), can be used exclusively with IM1841, C23117, C23118	IM1959
Cortisol zero calibrator (250 mL), can be used exclusively with IM1841, C23117, C23118	IM3444
Salivette tubes for saliva (100 pcs)	C19926
PBS (15 mL), can be used exclusively with C23117; C23118 saliva protocol	C19927



SKELETAL

Kit	Cat #	Method	Type	Tests	Max. activity kBq
25-OH Vitamin D total	B46327	RIA	CT	96	168
Calcitonin	B68737	IRMA	CT	96	720
Ostase	A44176	IRMA	CT	100	650
PTH	A11930	IRMA	CT	100	855
	B89461	IRMA	CT	50	855
PTHrP	C03593	IRMA	CT	50	185
PTHrP RUO	DSL8100	IRMA	CT	100	370

Kit	Sensitivity	Incubation time	Calibrator range	Sample	
				Vol. [µL]	Form
25-OH Vitamin D total	1.9 ng/mL	2 hrs+1 hr/RT; SH	0; 6-100 ng/mL	25	s
Calcitonin	0.9 pg/mL	17-19 hrs/2-8°C	0; 8-700 pg/mL	200	s
Ostase	1.75 µg/L	18-20 hrs/2-8°C	0; 8-120 µg/L	100	s
PTH	4.89 pg/mL	45 min+2 hrs/RT; SH	0; 20-2500 pg/mL	200	s; p
PTHrP	9.78 pg/mL	16-22 hrs/18-23 °C; SH	0; 25-2000 pg/mL	100	p
PTHrP RUO	9.78 pg/mL	16-22 hrs/18-23 °C; SH	0; 25-2000 pg/mL	100	p

AVAILABLE SEPARATELY

Reagent	Cat #
Calcitonin free serum (1 vial), can be used exclusively with B68737	C71104

ALLERGY

Kit	Cat #	Method	Type	Tests	Max. activity kBq
Histamine	IM1659	RIA	CT	100	148

Kit	Sensitivity	Incubation time	Calibrator range	Sample	
				Vol. [μ L]	Form
Histamine	0.25 nM	2 hrs/2-8°C; SH	0; 1-100 nM	100	p; u; b

GROWTH

Kit	Cat #	Method	Type	Tests	Max. activity kBq
GH	IM1397	IRMA	CT	100	370
IGF-1	A15729	IRMA	CT	100	370
IGFBP-3	DSL6600	IRMA	CT	100	370

Kit	Sensitivity	Incubation time	Calibrator range	Sample	
				Vol. [μ L]	Form
GH	0.1 mIU/L	1 hr/RT; SH	0; 0.5-100 mIU/L	50	s; p
IGF-1	4.55 ng/mL	1 hr/RT; SH	0; 25-1600 ng/mL	50	s; p
IGFBP-3	0.27 ng/mL	18-24 hrs/RT; SH	0; 2-100 ng/mL	50	s

AVAILABLE SEPARATELY

Reagent	Cat #
IGFBP-3 zero calibrator (55 mL), can be used exclusively with DSL6600	A99225

OTHERS

Kit	Cat #	Method	Type	Tests	Max. activity kBq
cAMP	IM1117	RIA	CT	100	111
Cyclosporine direct	IM3679	RIA	CT	100	250
Ferritin	IM3492	IRMA	CT	100	325

Kit	Sensitivity (LoD*)	Incubation time	Calibrator range	Sample	
				Vol. [μ L]	Form
cAMP	0.06 nM	18 hrs/2-8°C	0; 0.5-50 nM	100	p; u
Cyclosporine direct	1.61 ng/mL	1 hr/RT; SH	0; 40-2500 ng/mL	20	b
Ferritin	1.64 ng/mL*	1 hr/RT; SH	0; 5-1200 ng/mL	20	s; p

WASH SOLUTIONS - AVAILABLE SEPARATELY

Reagent	Cat #
Wash solution U (1 vial)	A54825

IRMA Immuno Radio Metric Assay
 RIA Radio Immuno Assay
 REA Radio Enzyme Assay
 RRA Radio Receptor Assay
 CT Coated Tubes

HP Homogeneous Phase
 CB Coated Beads
 N.A. Not Applicable
 LoD Limit of Detection
 RT Room Temperature

SH Shaking
 RUO Research Use Only
 s Serum
 p Plasma
 a Amniotic Fluid

u Urine
 b Blood
 ex: Extraction of:
 sal Saliva

Not all the products are available in all the countries - please, ask your local distributor. This product list is subject to change without further notice.
 All the kits are IVD, CE marked, unless otherwise specified.



Contact:
Beckman Coulter Czech Republic s.r.o.
V Parku 2316/12, 148 00 Prague 11
Czech Republic
E-mail: imunochem@beckman.com
Web site: immunotech.cz

Printed in the Czech Republic
2024_11-OCT-PL2025_RIA-MIB-BR-CZ-EN